

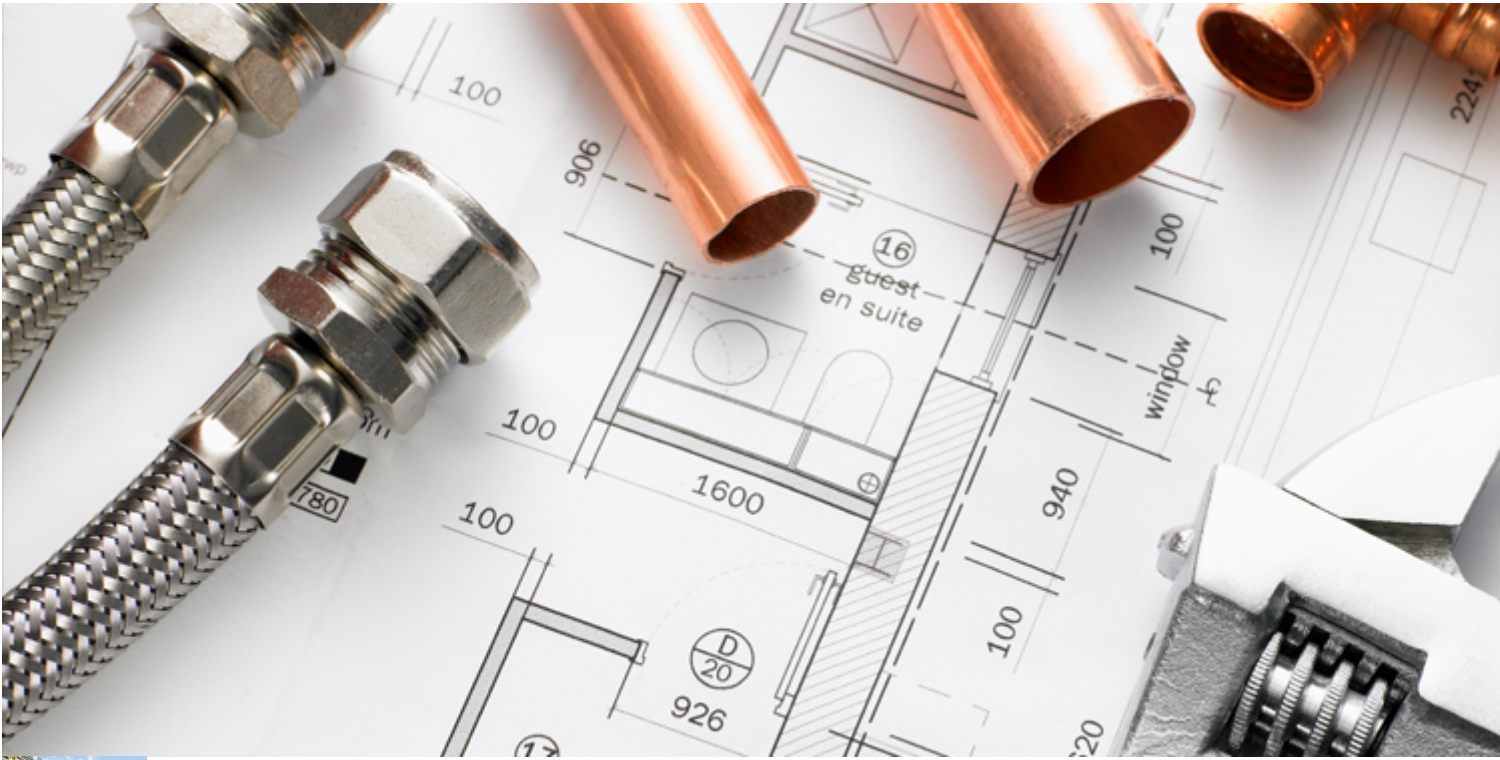
```

body, .inner-page { background-color: #ffffff; } body { color: #535353; } #footer { background-color:
#ffffff; } #footer { color: #535353; } a: hover, .info_pop .buyit, .m_title, .smallm_title, .circle_title, .feature_box
.title, .services_box .title, .latest_posts.default-style .hoverBorder: hover h6, .latest_posts.style2 ul.posts
.title, .latest_posts.style3 ul.posts .title, .recentwork_carousel li .details h4, .acc-group.default-style > button,
.acc-group.style3 > button: after, .acc-group.style3 > button: hover, .acc-group.style3 > button: hover: after,
.screenshot-box .left-side h3.title, .vertical_tabs.tabbable .nav>li>a: hover, .vertical_tabs.tabbable
.nav>li.active>a, .vertical_tabs.tabbable .nav>li.active>a>span, .vertical_tabs.tabbable
.nav>li>a: hover>span, .statbox h4, .services_box.style2 .box .list li, body.component.transparent a,
.shop.tabbable .nav li.active a, .product-list-item: hover .prod-details h3, .product-page .mainprice
.PricesalesPrice > span, .cart_details .checkout, .vmCartModule .carttotal .total, .oldie .latest_posts.default-
style .hoverBorder: hover h6 { color: #cb2429; } header.style1, header.style2 #logo a, header.style2 a#logo,
header.style3 #logo a, header.style3 a#logo, .tabs_style1 > ul.nav > li.active > a { border-top: 3px solid
#cb2429; } nav#main_menu > ul.sf-menu > li.active > a, nav#main_menu > ul.sf-menu > li > a: hover,
nav#main_menu > ul.sf-menu > li: hover > a, .social-icons li a: hover, .how_to_shop .number, .action_box,
.imgboxes_style1 .hoverBorder h6, .imgboxes_style1 .hoverborder h6, .feature_box.style3 .box: hover,
.services_box .box: hover .icon, .latest_posts.default-style .hoverBorder h6, .recentwork_carousel li .details >
.bg, .recentwork_carousel.style2 li a .details .plus, .gobox.ok, .hover-box: hover, .circlehover,
.circlehover: before, .newsletter-signup input[type=submit], #mainbody .sidebar ul.menu li.active a,
#mainbody .sidebar ul.menu li a: hover, #map_controls, .hg-portfolio-sortable #portfolio-nav li a: hover, .hg-
portfolio-sortable #portfolio-nav li.current a, .ptcarousel .controls > a: hover, .itemLinks span a: hover,
.product-list-item .prod-details .actions a, .product-list-item .prod-details .actions input.addtocart-button,
.product-list-item .prod-details .actions input.addtocart-button-disabled, .shop-features .shop-feature: hover,
.btn-flat, .redbtn, .ca-more, ul.links li a, .title_circle, .title_circle: before, .br-next: hover, .br-previous: hover,
.flex-direction-nav li a: hover, .iosSlider .item .caption.style1 .more: before, .iosSlider .item .caption.style1
.more: after, .iosSlider .item .caption.style2 .more, .nivo-directionNav a: hover, .portfolio_devices
.more_details, #wowslider-container a.ws_next: hover, #wowslider-container a.ws_prev: hover { background-
color: #cb2429; } .iosSlider .item .caption.style2 .title_small, .nivo-caption, #wowslider-container .ws-title,
.flex-caption { border-left: 5px solid #cb2429; } .iosSlider .item .caption.style2.fromright .title_big, .iosSlider
.item .caption.style2.fromright .title_small { border-right: 5px solid #cb2429; } .action_box: before { border-
top-color: #cb2429; } .breadcrumbs li: after { border-left-color: #cb2429; } .theHoverBorder: hover { -webkit-
box-shadow: 0 0 0 5px #cb2429 inset; -moz-box-shadow: 0 0 0 5px #cb2429 inset; box-shadow: 0 0 0 5px
#cb2429 inset; } .offline-page .containerbox { border-bottom: 5px solid #cb2429; } .offline-page
.containerbox: after { border-top: 20px solid #cb2429; } body, h1, h2, h3, h4, h5, h6 { font-family: 'Lato',
'Helvetica', Arial, serif; } div.pp_kalypso .ppt, .flex-caption, .nivo-caption, .info_pop .text, .playVideo,
.textpop-style .texts > span, .ud_counter ul li, .video-container .captions .line, .newsletter-signup
input[type=submit], .page-title, .subtitle, #sidebar .title, .shop-latest .tabbable .nav li a, .topnav > li > a,
nav#main_menu > ul > li > a, .pricing_table .tb_header h4, .pricing_table .price, .process_box .number span,
.shop-features .shop-feature, .shop-features .shop-feature > h4, .shop-features .shop-feature > h5 { font-
family: 'Lato', 'Helvetica', Arial, serif; } body h1#logo a, body a#logo { width: 169px; height: 88px; ; }

```



## [Unterhaltsplanungen, Stratusanalysen](#)



### **Kaiseraugst:**

- 33 Liegenschaften der Einwohnergemeinde (Schuhhäuser, Kindergärten u.a.)
- 20 Liegenschaften der Ortsbürgergemeinde



### **Hittnau:**